



# Tarun Residency

By GROUND II SKY

TARUN RESIDENCY  
BY



GROUND II SKY



**GROUND 2 SKYE** is a flagship group of entities dedicated to providing high-quality solutions to its clients. We focus on delivering innovative, cost-effective and efficient solutions that are tailored to meet the needs of the modern world. The group is committed to ensuring customer satisfaction, which is their competitive advantage.

**GROUND 2 SKYE** and the subsidiaries offer a comprehensive end-to-end fully integrated solution to their clients. We have expertise spanning project conception, design, sourcing, bulk and link infrastructure, appointment and management of a professional team and final handover of the development. This makes us a one-stop-shop for our clients and enables us to handle every aspect of the project life cycle, right from its inception to its completion.

The group's USP lies in their collective skills and understanding of the market dynamics. This enables us to develop a unique value proposition for our clients by leveraging our expertise and knowledge.

**GROUND 2 SKYE** is currently operating as a complete professional construction service unit and has a proven track record of delivering successful projects for the clients.





**PROPOSED G+III STORIED  
RESIDENTIAL BUILDING  
AT 17 PANDITYA PLACE, KOLKATA**

# VIEWS 1

 **Farun**  
Residency



# VIEWS 2

  
Tarun  
Residency



# VIEWS 3

 **Farun**  
Residency



# VIEWS 4

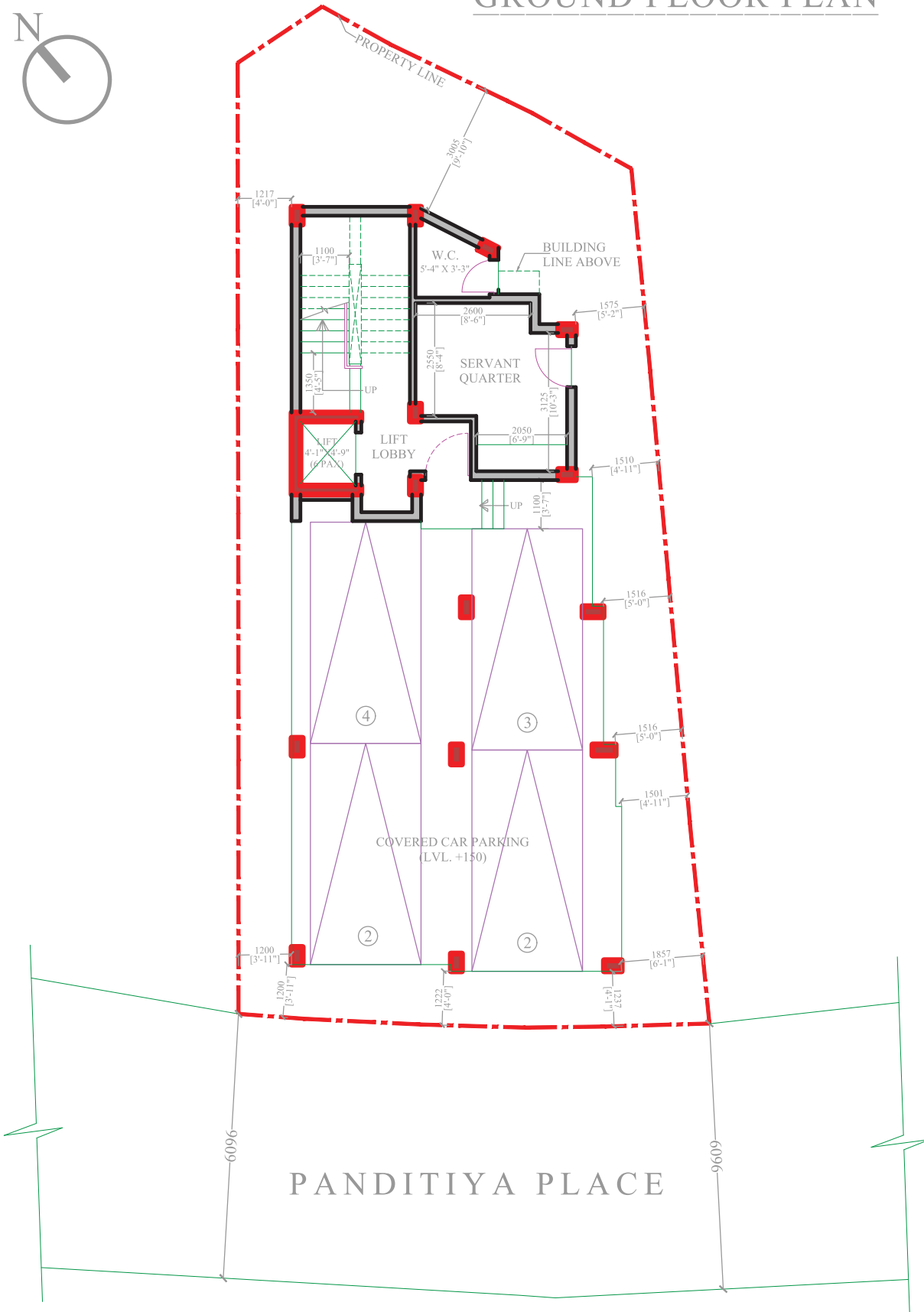
## Terrace Garden

 Parun  
Residency

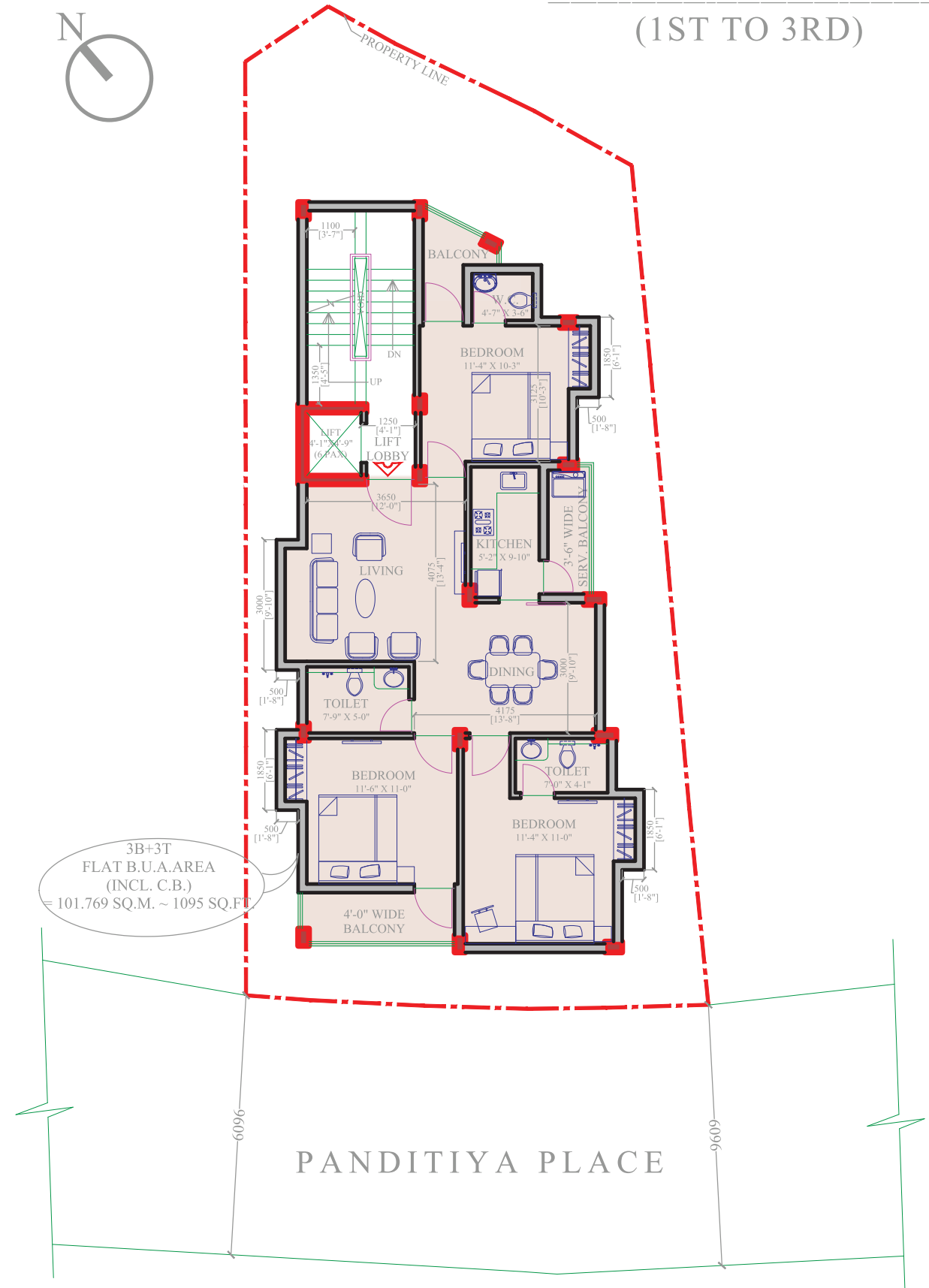


# PLANS

## GROUND FLOOR PLAN



## TYPICAL FLOOR PLAN (1ST TO 3RD)





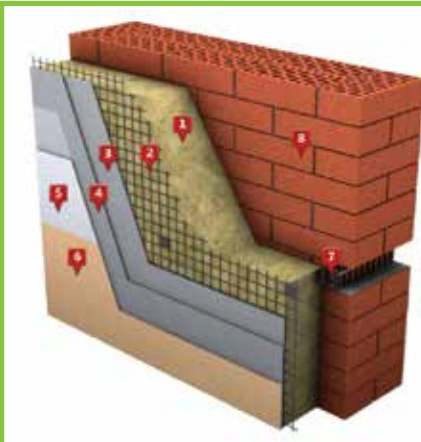
# SPECIFICATIONS

## STRUCTURE



Pile Foundation with RCC Framed as Per Seismic Design Incorporating 250 mm Thick External Brick Walls And 125/75 mm Thick Internal Brick Walls

## EXTERIORS



Cement Plaster with Weather Coat Paint of Soothing Colour and Preferred Finish.

## INTERIORS



P.O.P/Putty Punning Over Cement Plaster Inside All Rooms.

## INTERIORS



Vitrified Tiles or Marble (As Per Choice) In Bedrooms, Living / Dining and Balcony. Ceramic / Anti – Skid Tiles in Bathrooms and Kitchen Areas.

## KITCHEN



Quartz Kitchen Counter, Stainless Steel Sink, 600mm Glazed Ceramic Tiles Dado Above Granite Counter, C.P. Fittings of Reputed Brand. Purified Water Filter Point Will Be Provided.

## TOILET



Glazed Ceramic Tiles Dado Up to Door Height, Ceramic Basins, C.P. Fittings of Reputed Brand. Concealed Piping System for Hot and Cold-Water Lines.

## DOORS



Malaysian Sal wood Frame with Phenol Bonded Commercial Ply Of 32 mm Thickness for Internal Doors And 35 mm Thick Teak Wood Veneer for Main Door with Peep Hole and Godrej Night Latch.

## WINDOWS



UPVC Sliding Windows with Glass Inserts and Matching Fittings.

# SPECIFICATIONS

## ELECTRICAL



Concealed Insulated Copper Wiring with Modular Switches of Reputed Brand, Pre-Fitted ACs Of Reputed Brand in All Bedrooms and Living/Dining. Light And Plug Points in Bedrooms, Living and Drawing Rooms as Per the Architectural Scheme. Geyser Point in All Bathrooms. CCTV Surveillance System for Common Areas.

## PLUMBING



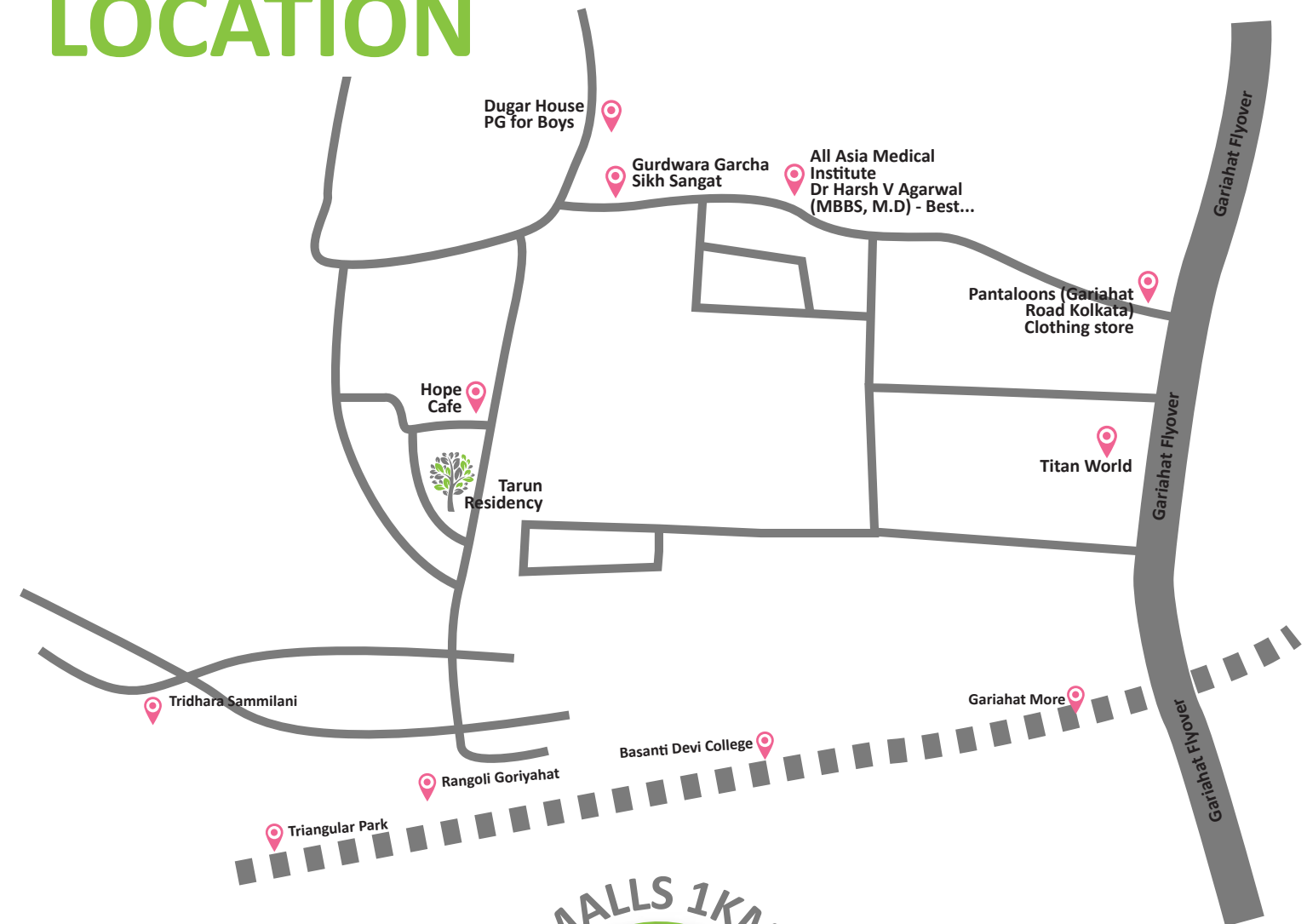
Internal Concealed Piping System With CPVC / UPVC Lines for Cold and Hot Water Lines Including Wash Basin.

## SANITARYWARE



Porcelain Sanitary Ware of Reputed Brand (Grohe/Jaquar /Kohler)

# LOCATION



# NEARBY

# ONGOING AND COMPLETED PROJECTS:



## G2S PRIVY

**Ground 2 Skye PRIVY** (off Southern Avenue): This is a high-rise residential building with 18 floors located at S P Mukherjee Road, Tollygunge, South Kolkata. The building is ultra-luxurious and offers a wide range of amenities and facilities to the residents. It overlooks the famous Rabindra Sarobar Lakes and is located in a prime area of the city. The building offers a range of spacious and well-designed apartments with modern fittings and fixtures.

## B.P Poddar

**Extension of B.P Poddar Hospital:** This project involved the project management consultancy work for extending one of the premium hospitals in Kolkata, B.P Poddar Hospital. The hospital is known for providing high-quality medical care and the extension carried out by Ground 2 Skye, has allowed it to expand its services and facilities.



## TOWN SQUARE, BARRACKPORE

**Ground 2 Skye Town Square** (Barrackpore): This is a mixed-use building that would offer both residential and commercial spaces. It is located at a prime location in Barrackpore and aims at providing a range of modern amenities to the residents. The commercial spaces cater to the needs of the residents and the local community, while the residential units offer comfortable and modern living spaces.



GROUND II SKYE

Overall, the above-mentioned projects showcase the Group's commitment to quality construction and design and their ability to deliver on large-scale projects with various complexities. We also demonstrate the expertise in providing modern and comfortable living spaces and facilities to our clients, while meeting high standards of safety and quality.

#### UPCOMING PROJECTS:

**1.** B+G+12 floors of mixed-use building at Pathuriaghat, Burra Bazar, Kolkata, that will have commercial space up to the 3rd. floor and residential units on the upper floors. The saleable area of the tower would be in excess of 120,000 sq. ft. This would turn out to be one of the most prestigious projects awarded to the Group and would help to significantly transform the congested business district and the skyline of Burra Bazar.

**2.** B+G+4 commercial-cum-residential building of 17,000 sq. ft. at Topsia Road: This upcoming project is a mixed-use building that will have commercial space on the ground floor and residential units on the upper floors. The building is located in an up-and-coming neighborhood in Kolkata and is expected to be a modern and stylish addition to the area. The commercial space on the ground floor will cater to the needs of the residents, while the residential units will provide comfortable and contemporary living spaces.

**3.** G+4 residential building in New Alipore spanning approximately 7,000 sq. ft.: This upcoming project is a residential building with 4 floors plus a ground floor, located in New Alipore, Kolkata. The building will span an area of approximately 7,000 sq. ft. and will provide modern and comfortable living spaces to the residents. The building's design will aim to provide ample natural light and ventilation to the living spaces, while the amenities will include a gym and a community hall.

**4.** New Town, there is an upcoming residential project comprising approximately 8 flats with a combined super built-up area of 10,000 square feet. This G+4 building promises a prime residential setting, featuring modern design, spacious living spaces, premium amenities, 24/7 security, and convenient access to key facilities in the area.

# *Thank you*



GROUND II SKY ☰

*"We don't Promise, We Deliver"*

**GROUND 2 SKYE SOLUTIONS LLP**

1/425, Gariahat Road, 7th Floor  
Kolkata - 19, W. B.

### **Disclaimer**

This is not a legal document. It describes the concept and intent of the project. All the areas/dimensions/layouts/elevations/pictures are only indicative and not as per scale. All the details are subject to change, alteration or modification as per the management's discretion.